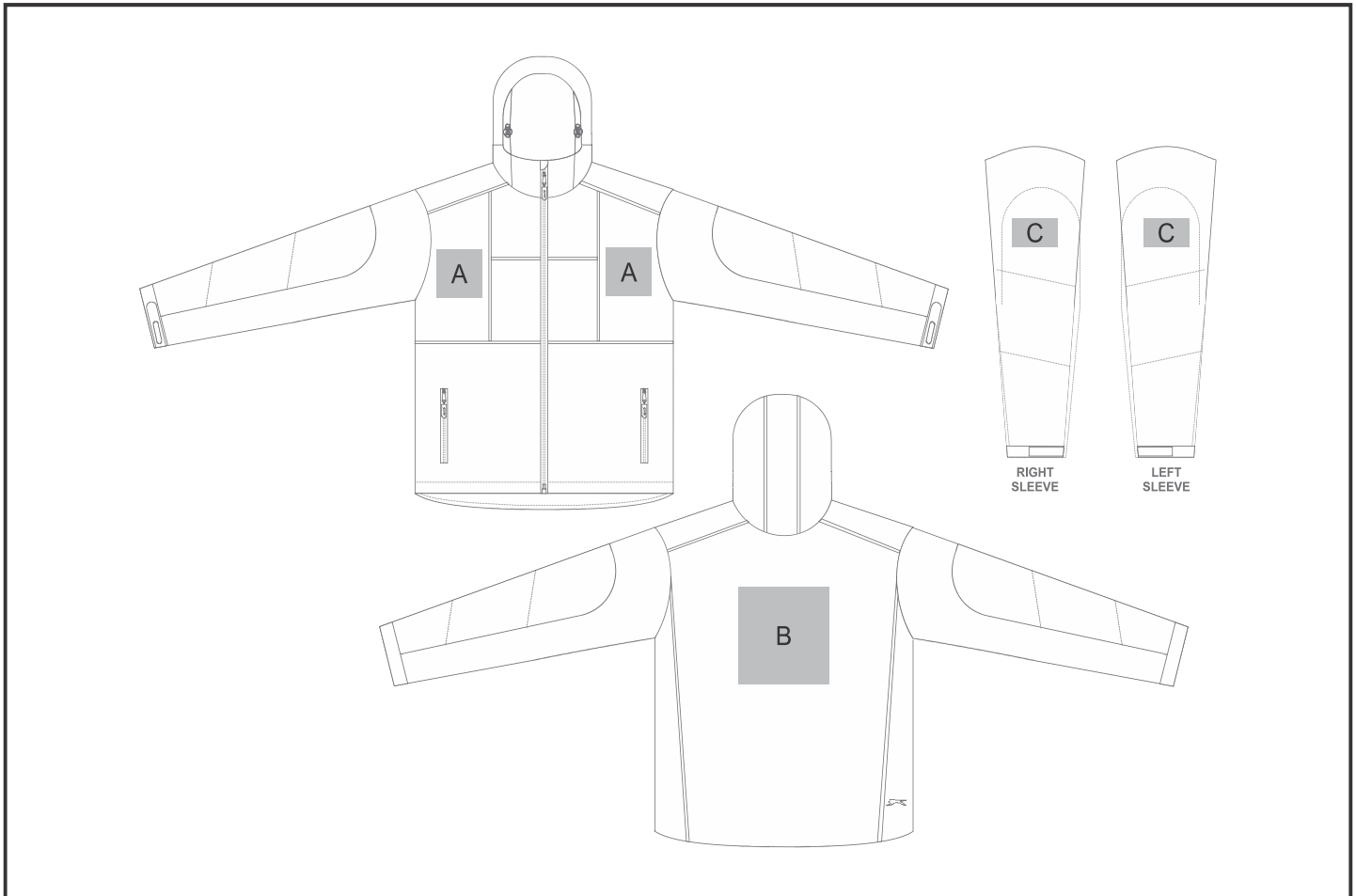


JC-SL-132-A

Mens Nexus Softshell Jacket



Need to know:

- Includes 1-Position Embroidery (setup fees apply)
- **EMB Inclusive Parameters:** Left/Right Chest or Back = 100mm x 100mm
- No Laser on Black Items on Piping or seams
- **Laser colour:** Tonal

Branding Options:

Position	Branding Method (Branding Code)	No. of Colours	Dimension
A	Embroidery (EM-CLOTHING)	N/A	80mm wide x 40mm high
A	Laser Engraving (LG)	N/A	100mm wide x 80mm high
A	Digital Transfer Clothing A6 (DTC-A6)	Full Colour	100mm wide x 100mm high
A	Silicone (STP-A)	N/A	30mm wide x 30mm high
A	Silicone (STP-B)	N/A	50mm wide x 50mm high
A	Silicone (STP-C)	N/A	80mm wide x 80mm high

B	Embroidery (EM-CLOTHING)	N/A	200mm wide x 200mm high
B	Laser Engraving (LG)	N/A	200mm wide x 200mm high
B	Digital Transfer Clothing A6 (DTC-A6)	Full Colour	105mm wide x 148mm high
B	Digital Transfer Clothing A5 (DTC-A5)	Full Colour	200mm wide x 148mm high
B	Silicone (STP-A)	N/A	30mm wide x 30mm high
B	Silicone (STP-B)	N/A	50mm wide x 50mm high
B	Silicone (STP-C)	N/A	80mm wide x 80mm high
B	Silicone (STP-D)	N/A	120mm wide x 40mm high

C	Embroidery (EM-CLOTHING)	N/A	80mm wide x 60mm high
C	Laser Engraving (LG)	N/A	100mm wide x 60mm high
C	Silicone (STP-A)	N/A	30mm wide x 30mm high
C	Silicone (STP-B)	N/A	50mm wide x 50mm high